

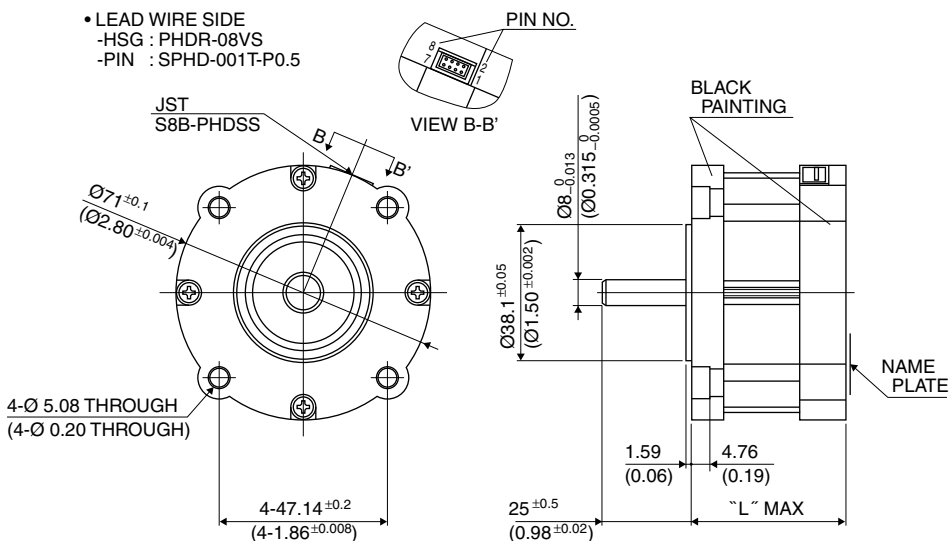
# 71○ 1.8°

# 29SM-K

# 1.8°

## Outline

- LEAD WIRE SIDE  
-HSG : PHDR-08VS  
-PIN : SPHD-001T-P0.5



Hybrid

UNIT: mm  
(inch)

PIN NO. vs. PHASE

(PHASE)	A	A COM	$\bar{A}$	B	B COM	$\bar{B}$
(PIN NO.)	3	1	2	8	7	5

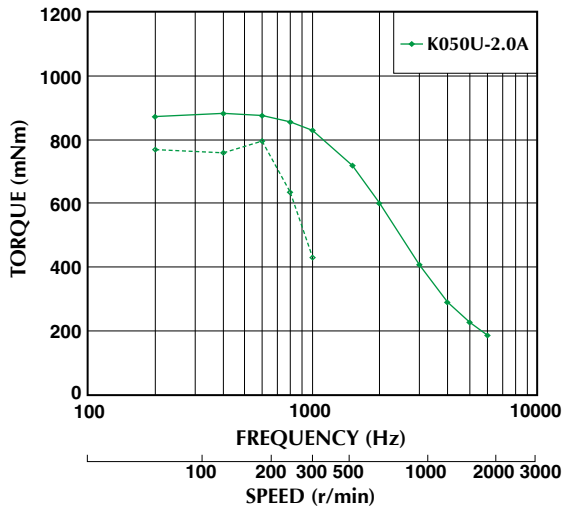
	"L"
29SM-K5**	39.5
29SM-K2**	43.5
29SM-K6**	46.5
29SM-K3**	51.5
29SM-K0**	55.5
29SM-K1**	67.5
29SM-K7**	77.5
29SM-K4**	87.5

## Specifications

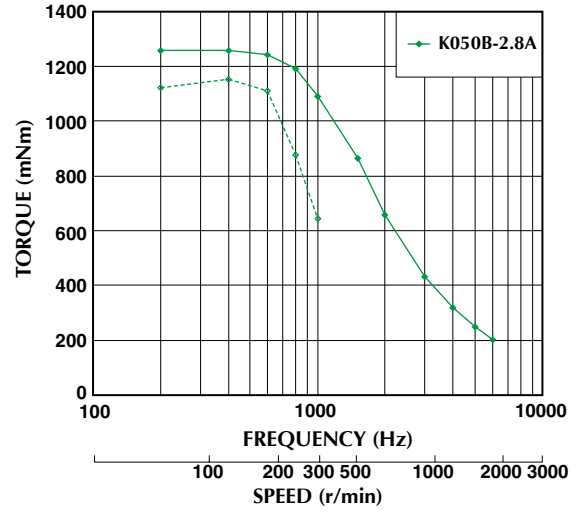
Model	Step Angle (deg)	Drive Sequence	Rated Current (A)	Resistance (Ohms)	Holding Torque (mNm)	Inductance (mH)	Rotor Inertia (g·cm <sup>2</sup> )	Detent Torque (mNm)	Mass (g)
29SM-K050U	1.8	UNI-POLAR	2.0	1.85	1236	3.7	390	37	900
29SM-K149U	1.8	UNI-POLAR	2.0	2.13	1569	4.7	515	49	1180
29SM-K250U	1.8	UNI-POLAR	1.6	2.0	672	3.3	220	22	660
29SM-K379U	1.8	UNI-POLAR	1.9	1.75	1000	3.1	330	32	820
29SM-K450U	1.8	UNI-POLAR	2.0	3.1	2550	7.8	770	74	1600
29SM-K550U	1.8	UNI-POLAR	1.5	2.1	500	3.1	165	12	570
29SM-K649U	1.8	UNI-POLAR	2.0	1.5	843	2.4	260	25	720
29SM-K711U	1.8	UNI-POLAR	3.0	1.0	1961	2.2	660	59	1390
29SM-K050B	1.8	BI-POLAR	2.8	0.97	1569	3.7	390	37	900
29SM-K149B	1.8	BI-POLAR	2.8	1.12	2079	4.7	515	49	1180
29SM-K250B	1.8	BI-POLAR	2.3	1.0	902	3.3	220	22	660
29SM-K379B	1.8	BI-POLAR	2.7	0.9	1373	3.1	330	32	820
29SM-K450B	1.8	BI-POLAR	2.8	1.6	3295	7.8	770	74	1600
29SM-K550B	1.8	BI-POLAR	2.1	1.1	667	3.1	165	12	570
29SM-K649B	1.8	BI-POLAR	2.8	0.75	1108	2.4	260	25	720
29SM-K711B	1.8	BI-POLAR	2.2	2.0	2550	8.5	660	59	1390

## Torque/Speed Characteristics

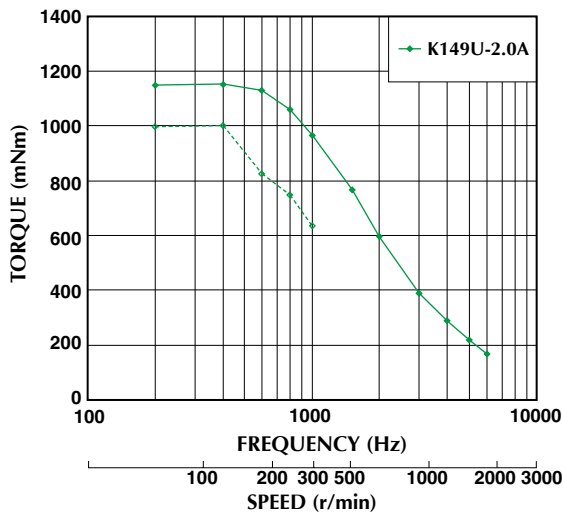
Model No: 29SM-K050U  
Driver: Chopper Dual  
Supply Voltage: 24.0 (Volt)



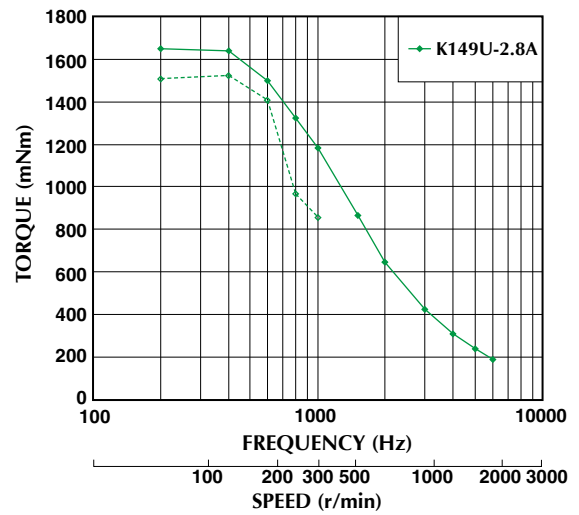
Model No: 29SM-K050B  
Driver: Chopper Dual  
Supply Voltage: 24.0 (Volt)



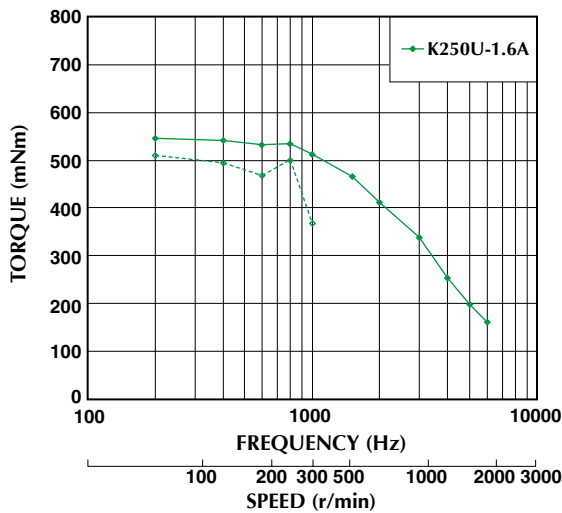
Model No: 29SM-K149U  
Driver: Chopper Dual  
Supply Voltage: 24.0 (Volt)



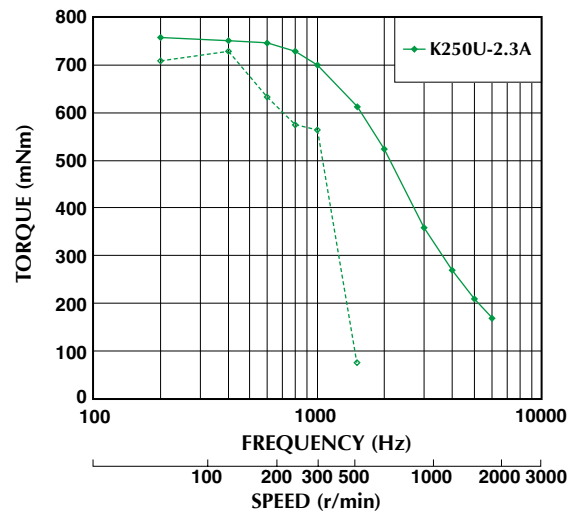
Model No: 29SM-K149B  
Driver: Chopper Dual  
Supply Voltage: 24.0 (Volt)



Model No: 29SM-K250U  
Driver: Chopper Dual  
Supply Voltage: 24.0 (Volt)



Model No: 29SM-K250B  
Driver: Chopper Dual  
Supply Voltage: 24.0 (Volt)

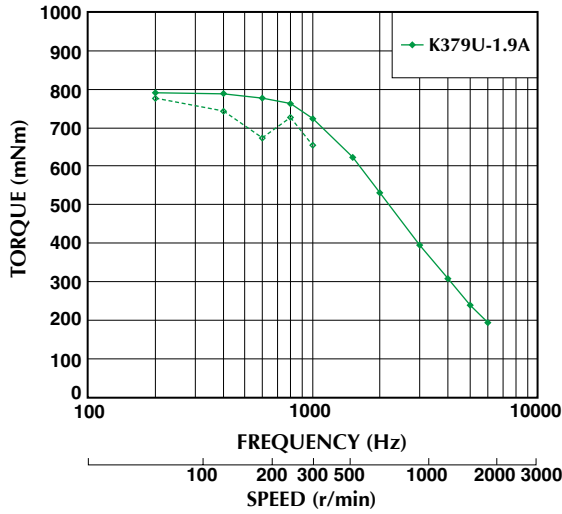


— : PULL OUT  
- - - : PULL IN

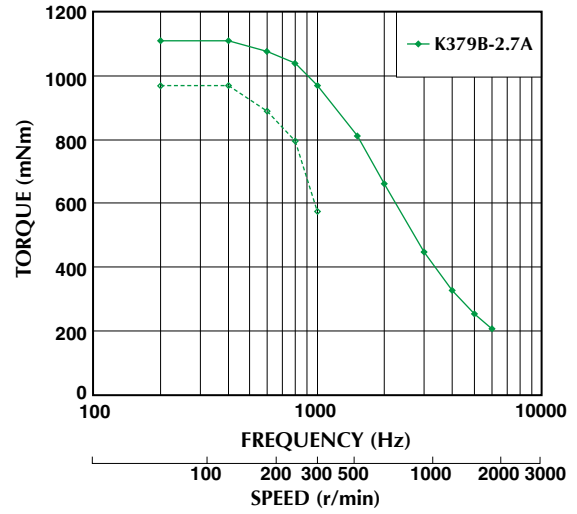
Torque/Speed characteristics are for reference only and it may change when operated at different drive conditions.

## Torque/Speed Characteristics

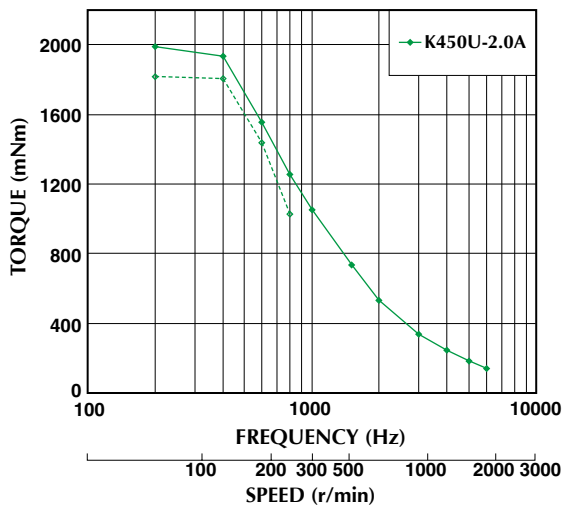
Model No: 29SM-K379U  
Driver: Chopper Dual  
Supply Voltage: 24.0 (Volt)



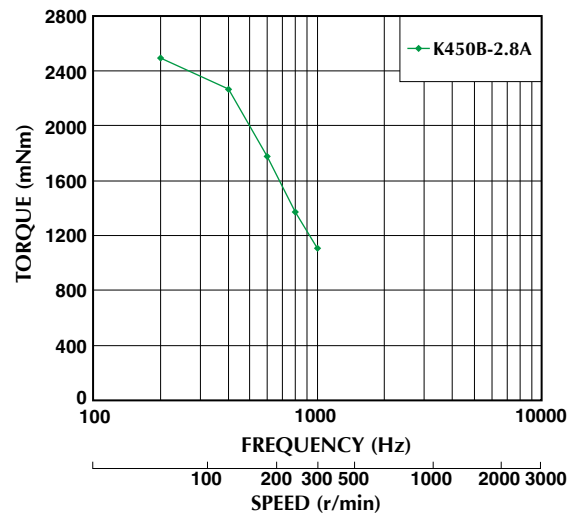
Model No: 29SM-K379B  
Driver: Chopper Dual  
Supply Voltage: 24.0 (Volt)



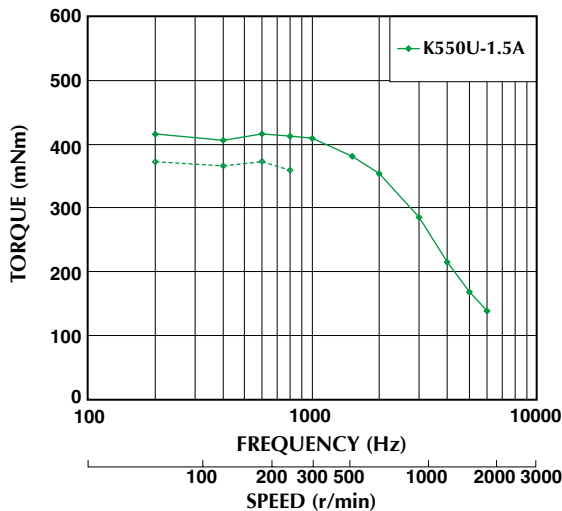
Model No: 29SM-K450U  
Driver: Chopper Dual  
Supply Voltage: 24.0 (Volt)



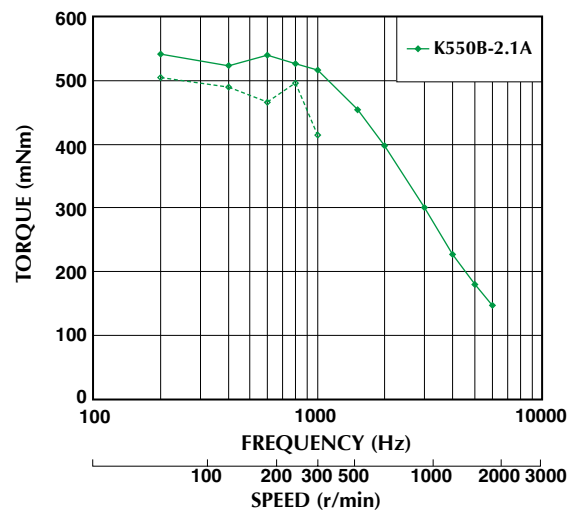
Model No: 29SM-K450B  
Driver: Chopper Dual  
Supply Voltage: 24.0 (Volt)



Model No: 29SM-K550U  
Driver: Chopper Dual  
Supply Voltage: 24.0 (Volt)



Model No: 29SM-K550B  
Driver: Chopper Dual  
Supply Voltage: 24.0 (Volt)

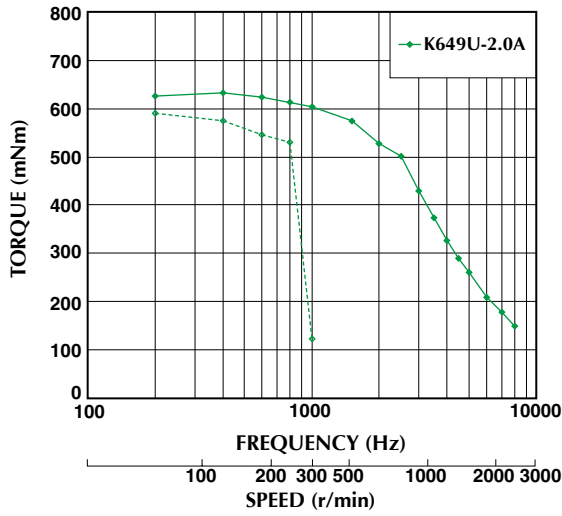


— : PULL OUT  
- - - : PULL IN

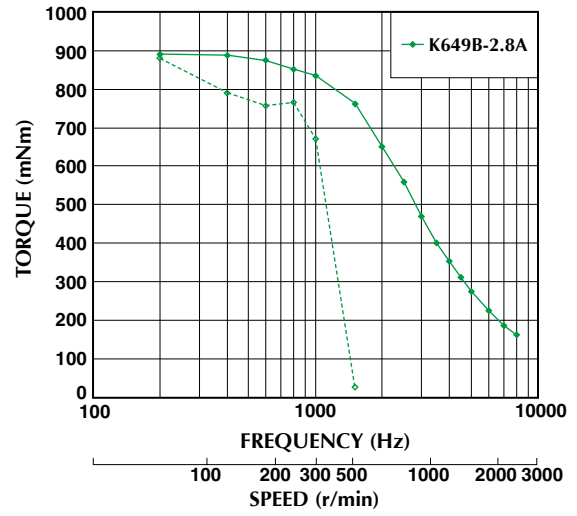
Torque/Speed characteristics are for reference only and it may change when operated at different drive conditions.

## Torque/Speed Characteristics

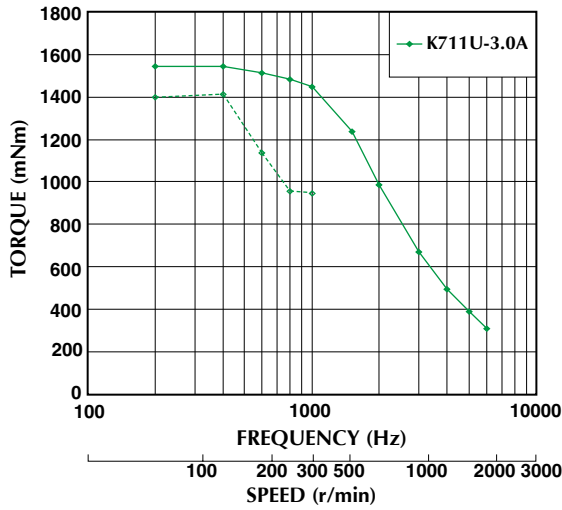
Model No: 29SM-K649U  
 Driver: Chopper Dual  
 Supply Voltage: 24.0 (Volt)



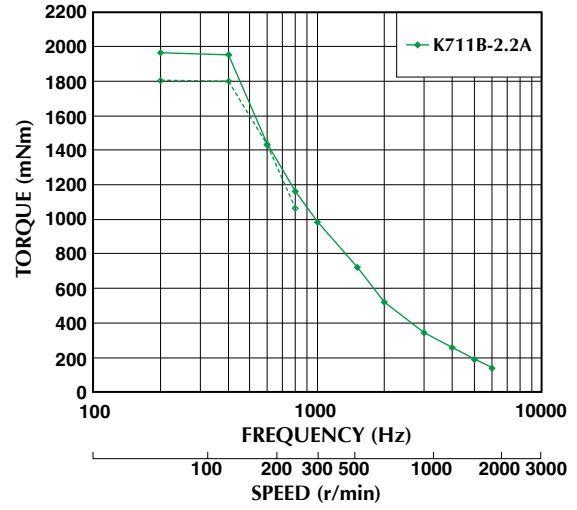
Model No: 29SM-K649B  
 Driver: Chopper Dual  
 Supply Voltage: 24.0 (Volt)



Model No: 29SM-K711U  
 Driver: Chopper Dual  
 Supply Voltage: 24.0 (Volt)



Model No: 29SM-K711B  
 Driver: Chopper Dual  
 Supply Voltage: 24.0 (Volt)



— : PULL OUT  
 - - - : PULL IN

Torque/Speed characteristics are for reference only and it may change when operated at different drive conditions.